

## 3MP ANPR-Ultra -Low Light Bullet Camera EV-IPVF3MP / EV-IPVF8MP



- 3 MP (1/1.8" GMOS), 2064 × 1544@ 50 fps
- 8 MP (1" GMOS), 4096 × 2160@ 30 fps
- Color: 0.001 Lux @ (F1.4, AGC ON)
- H.265, H.264, MJPEG
- 60 dB SNR
- 3D DNR
- Alarm I/O
- 3 RS-485 interfaces
- Two defined streams
- Built-in microSD/TF card, up to 128 GB
- License plate recognition
- IP66
- Larger than 99% for detection sensitivity
- Larger than 97% for LPR accuracy

## Superiority

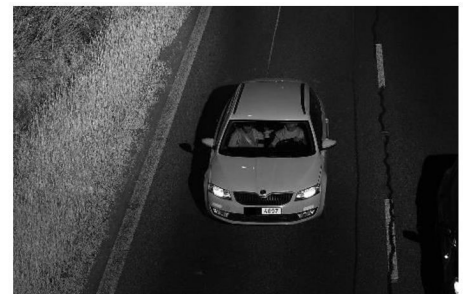
- Dedicated camera for ANPR
  - HD resolution
  - Professional shutter speed control
- Built-in ANPR engine, equipped with deep learning algorithm
- Multiple detection and recognition
  - Vehicle type recognition
  - Vehicle color recognition
  - Vehicle manufacturer
  - Radar speed detection
  - Driving on Lane Line Detection
  - Illegal Lane Change Detection
  - Wrong-way driving detection
  - Seatbelt Detection
  - Phone Call Detection

## Application

- Vehicle control
- Traffic monitoring
- Toll collection
- Security

## Scenarios

- Highway
- Tunnel
- Toll station
- Urban road



## Specification

Camera	EV-IPVF3MP	EV-IPVF8MP
Image Sensor	3 MP (1/1.8" GMOS)	8 MP (1" GMOS)
Min. Illumination	Color: 0.001 Lux @ (F1.4, AGC ON)	
Shutter Speed	50 us-20000 us	50 us-40000 us
Digital Noise Reduction	2D/3D DNR	
SNR	60 dB	
<b>Lens</b>		
Focal length	5 mm-50 mm	25 mm
Aperture	F1.4	
Focus	Manual	
FOV	CS-mount Horizontal field: 35°-10° Vertical field: 27°-7°	CS-mount Horizontal field: 31° Vertical field: 16.9°
	C-mount (with adapter ring)	
Supplement Light	3 LED strobe supplement lights, angle: 40° Light supplement for license plate up to 30 m far away	
<b>Compression Standard</b>		
Video Compression	Main stream: H.265/H.264/MJPEG Sub-stream: H.265/H.264/MJPEG	
H.264 Type	Baseline profile/Main profile/High profile	
H.265 Type	Baseline profile/Main profile/High profile	
Video Bit Rate	32 Kbps to 16 Mbps	
Audio Compression	No	
Audio Bit Rate	No	
<b>Smart Feature</b>		
Recognition	License plate recognition	
Coverage	1 lane	2-3 lanes
Trigger Mode	External I/O trigger/Radar trigger/Video trigger	
Supplement Light Type	External strobe/flash/continuous light	
Smart Function	Vehicle type classification, color identification, no-plate vehicle capture, vehicle driving direction detection	
Accuracy (Under recommended installation and lighting conditions)	Capture rate > 98% Vehicle moving direction recognition accuracy > 98.5% LPR accuracy > 98% Mistaken capture rate < 2%	
No License Plate Detection	Supported	
Motorcycle LPR	Supported	
Vehicle Type	Car/Van/Bus/Truck/Others	
Vehicle Color	Red, yellow(including orange), green, blue, purple, brown, white, grey(including silver), black	
License Plate Color Recognition	Customized to support	
Driving on Lane Line Detection	Supported (only strobe light mode)	
Illegal Lane Change Detection	Supported (only strobe light mode)	

<b>Wrong-way Driving Detection</b>	Supported	
<b>Emergency Lane Occupation</b>	Supported (truck forbidden lane, emergency lane, urban bus lane)	
<b>Seatbelt Detection</b>	Supported (with flash supplement light SL-1211-2)	
<b>Phone Call Detection</b>	Supported (with flash supplement light SL-1211-2)	
<b>Capture Speed Range</b>	5 to 250 km/h	
<b>Image</b>		
<b>Max. Resolution</b>	2064 × 1544	1096 × 2160
<b>Main Stream</b>	50 Hz: 50 fps (2064 × 1544, 2048 × 1536, 1920 × 1080) 60 Hz: 30 fps (2064 × 1544, 2048 × 1536, 1920 × 1080)	50 Hz: 25 fps (4096 × 2160, 1920 × 1080P, 1280 × 720) 60 Hz: 30 fps (4096 × 2160, 1920 × 1080P, 1280 × 720)
<b>Sub-Stream</b>	1920 × 1080, 1280 × 720, 704 × 576, 352 × 288	1920 × 1080, 704 × 576
<b>Image Enhancement</b>	BLC, HLC, 3D DNR	
<b>Image Settings</b>	Rotate mode, saturation, brightness, contrast, sharpness, AGC, and white balance are adjustable by client software or web browser.	Saturation, brightness, contrast, sharpness, AGC, and white balance are adjustable by client software or web browser.
<b>Video Compression</b>	H.264 and H.265 encoding	
<b>Day/Night Switch</b>	Auto/Scheduled/Triggered by alarm in	
<b>Picture Overlay</b>	LOGO picture can be overlaid on video with 128 × 128 24-bit bmp format.	
<b>Network</b>		
<b>Network Storage</b>	microSD/TF card (128 GB), local storage and CVR, NVR, ANR (Optional)	
<b>Alarm Trigger</b>	HDD Error, network disconnected, IP address conflicted, vehicle detector exception, traffic light detector exception	
<b>Protocols</b>	TCP/IP, HTTP, HTTPS, FTP, DNS, DDNS, RTP, RTSP, RTCP, NTP, UPnP, IPv6, UDP	
<b>Security Measures</b>	Password protection, HTTPS encryption, digest authentication for HTTP/HTTPS, digest authentication for ONVIF (Version 2.1)	
<b>General Function</b>	One-key reset, three streams, heartbeat, password protection, watermark	
<b>API</b>	ONVIF (Version 2.1, PROFILE S, PROFILE G), ISAPI, SDK	
<b>Simultaneous Live View</b>	Up to 6 channels	
<b>User/Host</b>	Up to 32 users 3 user levels: administrator, operator and user	
<b>Client</b>	EV-VMS /Third Party VMS Support	
<b>Web Browser</b>	Plug-in free live view supported	
<b>Interface</b>		
<b>Audio</b>	No	
<b>Communication Interface</b>	2 RJ45 10M/100M/1000M self-adaptive Ethernet interfaces 3 RS-485 interfaces (half duplex, HIKVISION) 1 RS-232 interface	
<b>Alarm</b>	4 input interfaces, 6 output interfaces	
<b>On-board Storage</b>	Built-in microSD/TF card, up to 128 GB	
<b>BNC</b>	CVBS analog output (4CIF resolution), internal	
<b>Reset Button</b>	Supported	
<b>USB Interface</b>	1 USB 2.0 interface	
<b>GPS</b>	Optional	

General	
<b>Firmware Version</b>	V4.3.1
<b>Operating System</b>	Linux
<b>Certifications</b>	CE, FCC, RoHS
<b>Operating Conditions</b>	Temperature: -40 °C to +60 °C (-40 °F to +140 °F) Humidity: 95% or less (non-condensing)
<b>Power Supply</b>	24 VDC $\pm$ 20%/100 to 240 VAC
<b>Protection Level</b>	IP66
<b>Heater</b>	Supported
<b>Material</b>	Aluminum alloy
<b>Dimensions</b>	With package: 175.68 $\times$ 137.5 $\times$ 443.99 mm
<b>Weight</b>	Camera: approx. 6.5 $\pm$ 0.5 kg (14.3 $\pm$ 1.1 lb)
<b>Power Consumption</b>	< 30 W